

Whole School Week - Week beginning 4th May

Our theme this week is:

EXPLORERS





EXPLORERS



What is exploring?



In the dictionary it tells us exploring means: to travel through a place in order to learn about it or to inquire into a subject in detail.

What does it mean to be an explorer?

So that means to be an explorer you have to go somewhere or find out in detail about something!

So let's go and explore!

GO &
EXPLORE

memories

BON
VOYAGE

Tuesday – We are Jungle Explorers!



Today's learning is all about jungles. In yesterday's story about Lars the Polar Bear, he ended up travelling to somewhere much warmer. Today, have a go at writing your own story – if there are lots of people in your house, you could make one story all together.

After that, there are activity ideas for maths, history, geography and science. Don't feel that you have to do them all – go in whichever direction you would like to.

If you also fancy a family TV session, there is a fantastic episode of the David Attenborough programme, 'Planet Earth II' which is all about jungles. It is an hour long, and available on the BBC iplayer: <https://www.bbc.co.uk/iplayer/episode/b083wt7z/planet-earth-ii-3-jungles>

Here's a link to some great rainforest sounds too: <https://www.youtube.com/watch?v=ubNfkpbxXUs>



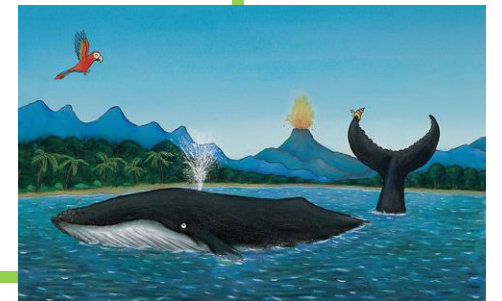
Jungle Explorers!

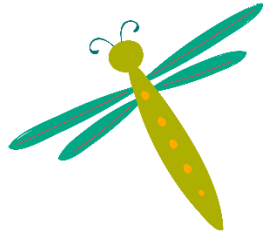
English



In yesterday's story, Lars ended up in the jungle

- This story is similar in some ways to the story of 'The Snail and the Whale' <https://brightstarbedtimestories.com/the-snail-the-whale-book-donaldson-scheffler/>
- Have a go at writing your own story where an animal travels around the world. Think about how your character travels, what they see and how they feel. How do they get home again?



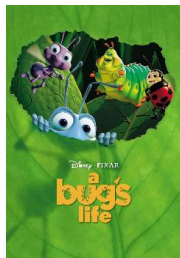


Explorers!



Being an explorer in your own jungle!

- You could explore your garden – imagine you are on Safari in your own garden – write and draw about what you discover!
- Imagine you have become tiny – the size of an ant – what would that be like? What dangers would you encounter? what challenges would you have to overcome? **'A Bug's Life'** is a good film to watch to help you imagine being tiny.





Explorers!



Being an explorer in your own jungle!

- When you are exploring your garden jungle, have a go at counting all the things you find. You can make a table or draw a graph of your discoveries. You could record the number of each colour of flower, or the different types of birds or mini-beasts that you spot. If you have a front and a back garden, you could compare them.
- You could also measure all sorts of things in your jungle – how big is the biggest leaf you can find? How small is the smallest flower? How wide is the path, or how long is the fence?

Jungle Explorers

Science

Different plants and animals are suited to different environments. Scientists call this '*adaptation*'. In the jungle, living things have to be able to survive when there are hot temperatures and lots of rain. This is very different to deserts, or the *temperate* climate that we have in this country. Have a look at this information from the Eden Project in Cornwall about different plants:

<https://www.edenproject.com/learn/for-everyone/plant-profiles>

And this information from the BBC about animal adaptation:

<https://www.bbc.co.uk/bitesize/topics/zvhhvcw/articles/zxg7y4j>

Try inventing your own plant or animal that would be really well suited to living in a jungle. What sort of features would it need?

You could also try this activity: <https://www.edenproject.com/learn/for-everyone/biome-in-a-box-activity>

Jungle Explorers

Geography



Where in the world are the jungles?

Use maps (online or in an atlas if you have one) to find the world's jungles. Look for forests in hot and tropical places. Draw your own world map showing where they are.

Research these areas and write and draw about them – the plants and animals, the climate, the countries which they are in. Find out about transport links in and to these areas, and the natural resources which are there. You could also do some research into the ways in which climate change and human activity are affecting these areas.

Also, have a look at this page for lots more rainforest activity ideas:

<https://www.naturalbeachliving.com/rainforest-activities-kids/>