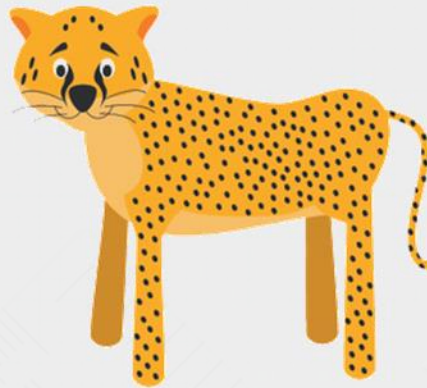
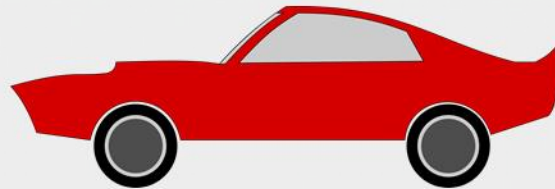


# Step 1: Measure Mass 1

## Introduction

**Which items would you measure in kilograms?  
Which items would you measure in grams?**



## Introduction

Which items would you measure in kilograms?  
Which items would you measure in grams?

Grams:

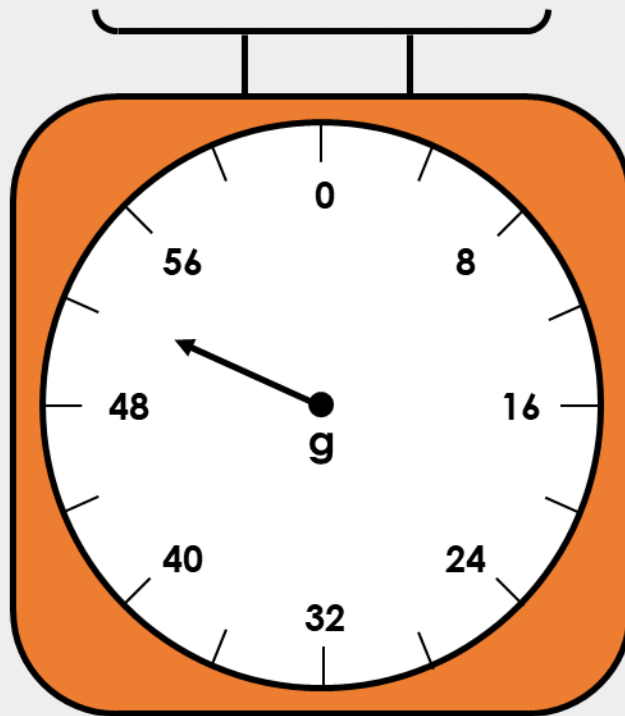


Kilograms:



## Varied Fluency 1

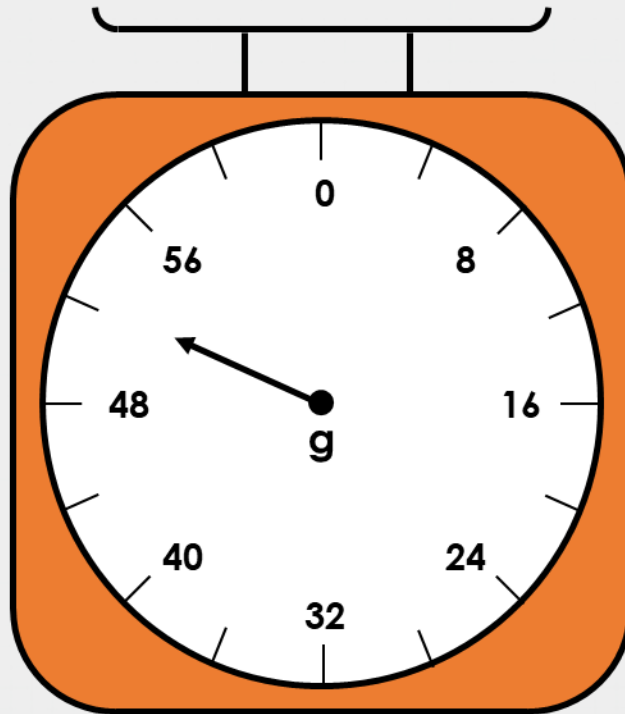
What mass is the arrow showing on this scale?





## Varied Fluency 1

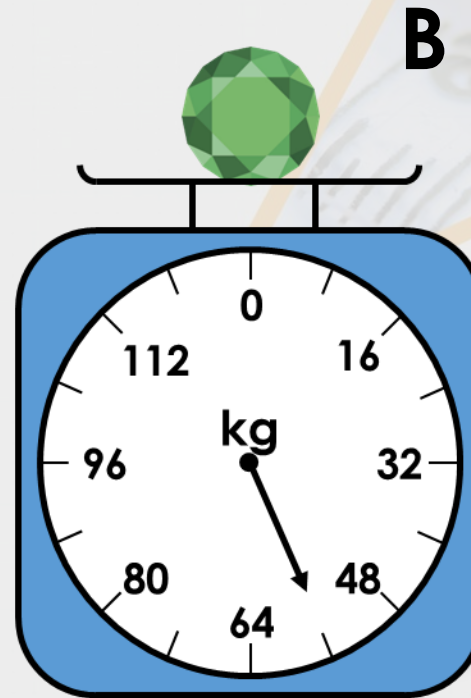
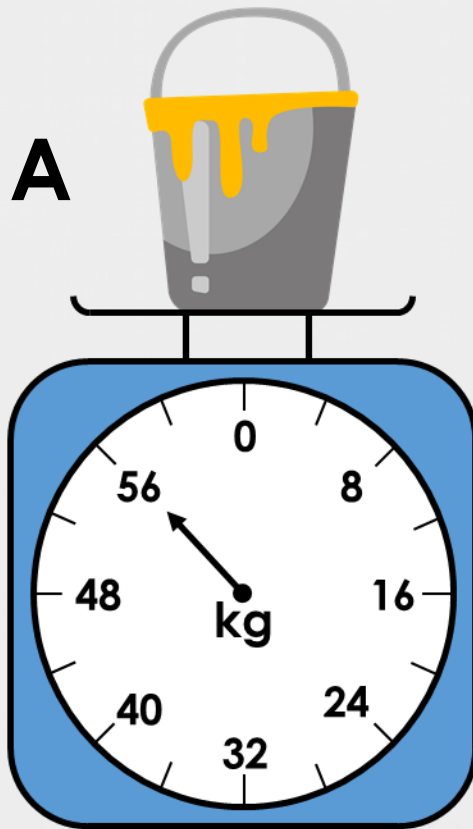
What mass is the arrow showing on this scale?



**52g**

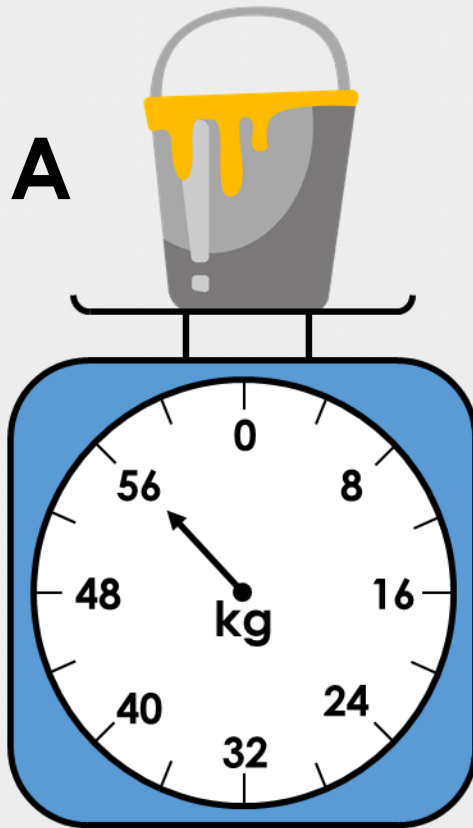
## Varied Fluency 2

Which object is the heaviest?

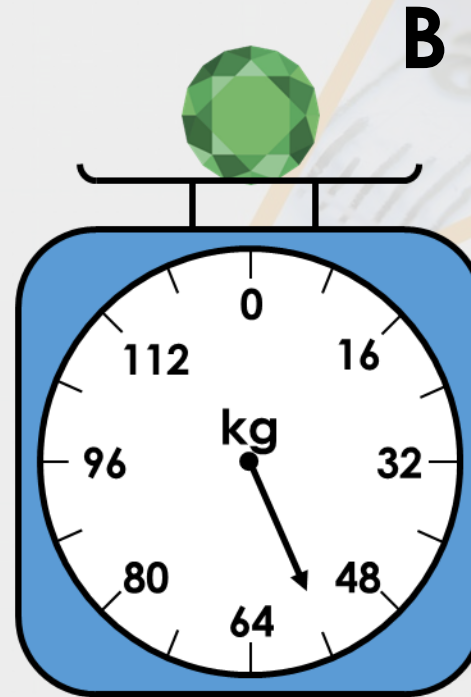


## Varied Fluency 2

Which object is the heaviest?



**A = 56kg**

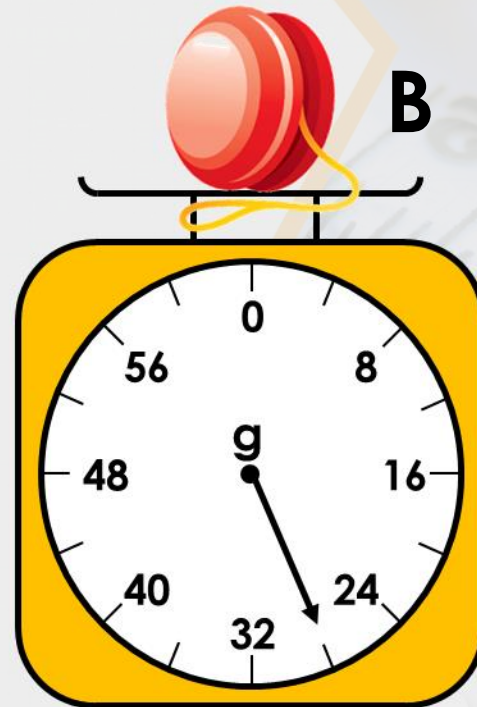
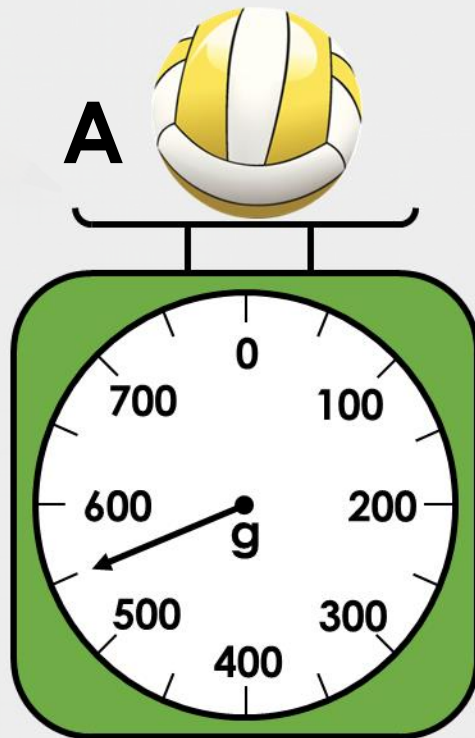


**B = 56kg**

**Neither because they weigh exactly the same.**

### Varied Fluency 3

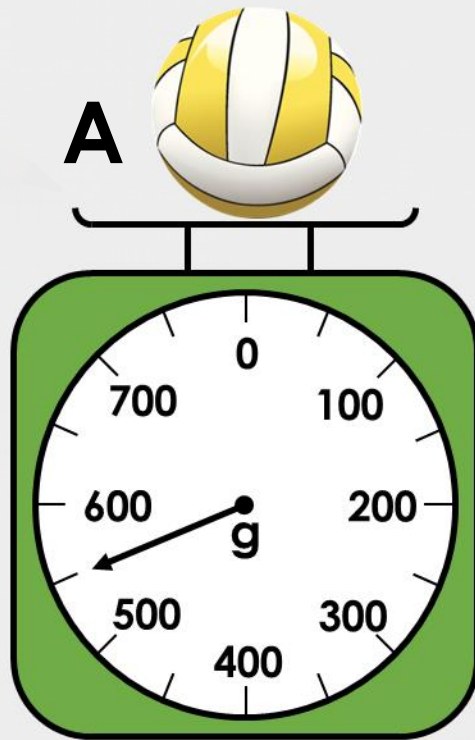
How much does each object weigh?



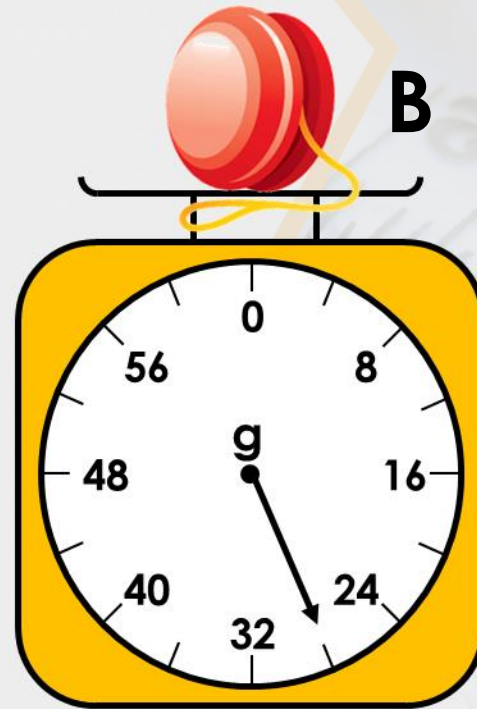


### Varied Fluency 3

How much does each object weigh?



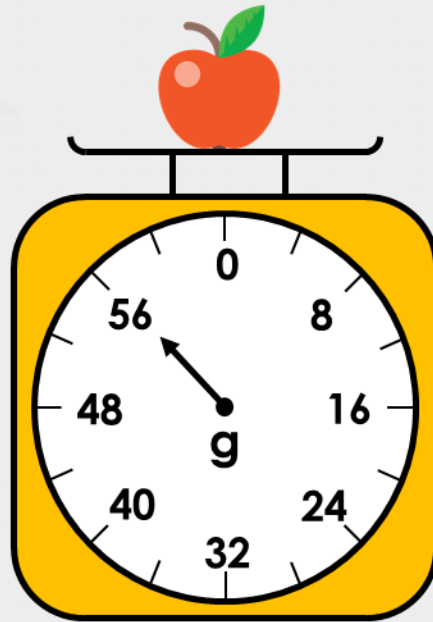
**550g**



**28g**

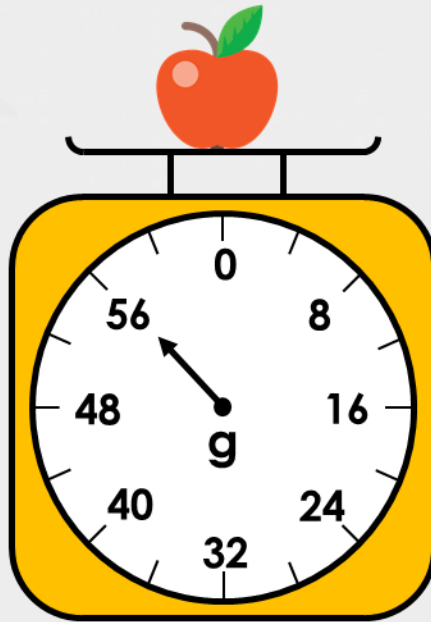
## Problem Solving 1

If two apples weigh the same as one coconut, draw an arrow on the scale to show the weight of the coconut.



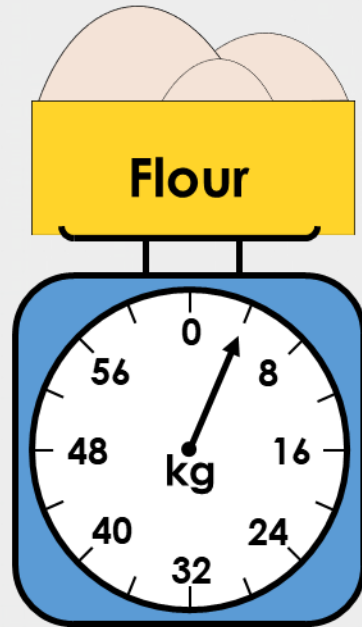
## Problem Solving 1

If two apples weigh the same as one coconut, draw an arrow on the scale to show the weight of the coconut.



## Problem Solving 2

Lizzie is making cakes. She needs 6kg of flour and 6kg of sugar.

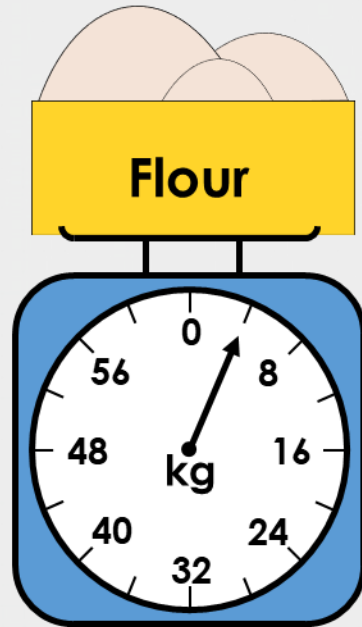


How much more of each ingredient does she need?



## Problem Solving 2

Lizzie is making cakes. She needs 6kg of flour and 6kg of sugar.

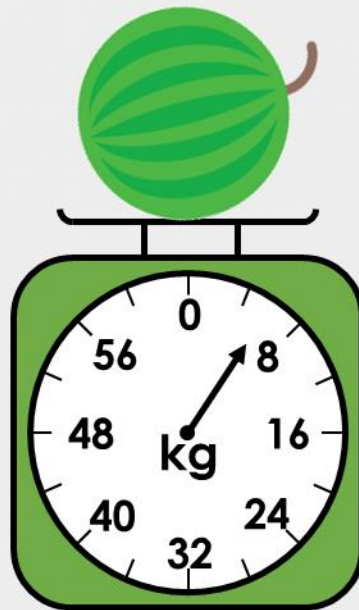


How much more of each ingredient does she need?

**2kg of flour**  
**4kg of sugar**

## Reasoning 1

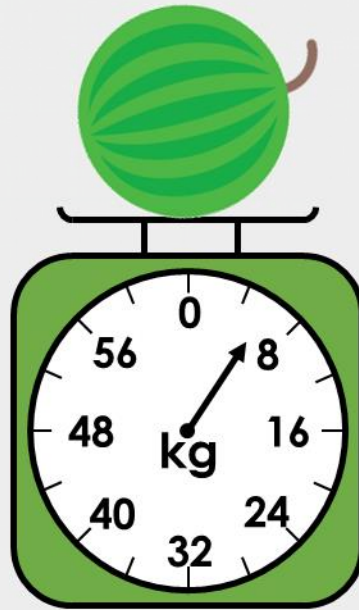
Joanne is weighing different items.  
She says the watermelon is heavier because the arrow on the scale is further away from zero.



Is she correct? Explain how you know.

## Reasoning 1

Joanne is weighing different items.  
She says the watermelon is heavier because the arrow on the scale is further away from zero.

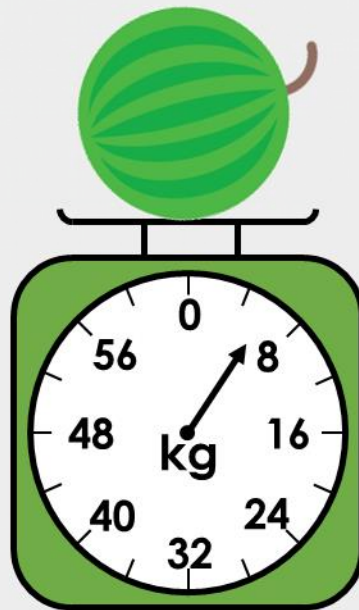


Is she correct? Explain how you know.  
Joanne is incorrect because...



## Reasoning 1

Joanne is weighing different items.  
She says the watermelon is heavier because the arrow on the scale is further away from zero.



Is she correct? Explain how you know.

**Joanne is incorrect because the watermelon weighs 6kg and the pumpkin weighs 4kg. The scales increase in different increments.**